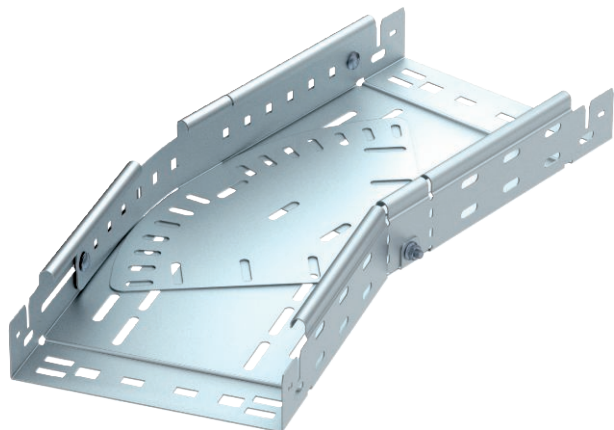


Technical data sheet

Magic 60 bend, variable

Item no. 6040506



Magic bend 0°–90°, variable, with quick connector system. For all cable tray types of 60 mm side height.

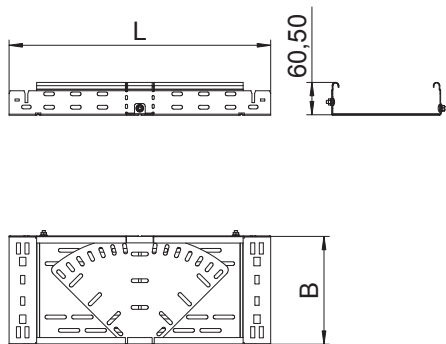


- St** Steel
- FT** Hot-dip galvanised

Master data

| | |
|--------------------------|----------------------|
| Item no. | 6040506 |
| Type | RBMV 630 FT |
| Description 1 | Variable bend |
| Description 2 | with quick connector |
| Dimension | 60x300 |
| Material | Steel |
| Material symbol | St |
| Surface | Hot-dip galvanised |
| Surface to DIN | DIN EN ISO 1461 |
| Surface symbol | FT |
| Smallest sales unit (VG) | 1 Piece |
| Weight | 386,30 kg/100 pc. |

Technical data



| | |
|--|-------------------------------------|
| Width | 300,00 mm |
| Side height | 60,00 mm |
| Dimension B | 300,00 mm |
| Dimension L | 640,00 mm |
| Bend (angle) | Adjustable |
| Connector version | Integrated connector |
| Plate thickness | 1,25 mm |
| Suitable for maintaining electrical function | <input type="checkbox"/> |
| Mounting perforation in base | <input checked="" type="checkbox"/> |
| NATO hole pattern | <input type="checkbox"/> |
| Change of direction | Horizontal |
| Rustproof steel, pickled | <input type="checkbox"/> |
| Side perforation | <input checked="" type="checkbox"/> |
| Wide-span version | <input type="checkbox"/> |