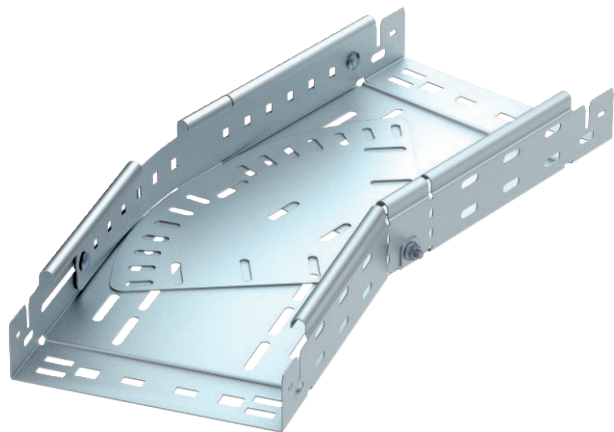


Technical data sheet

Magic 60 bend, variable

Item no. 6040500



Magic bend 0°–90°, variable, with quick connector system. For all cable tray types of 60 mm side height.

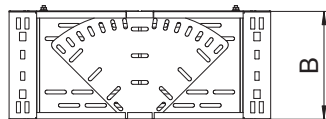
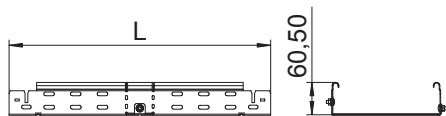


- St** Steel
- FT** Hot-dip galvanised

Master data

Item no.	6040500
Type	RBMV 610 FT
Description 1	Variable bend
Description 2	with quick connector
Dimension	60x100
Material	Steel
Material symbol	St
Surface	Hot-dip galvanised
Surface to DIN	DIN EN ISO 1461
Surface symbol	FT
Smallest sales unit (VG)	1 Piece
Weight	83,70 kg/100 pc.

Technical data



Width	100,00 mm
Side height	60,00 mm
Dimension B	100,00 mm
Dimension L	340,00 mm
Bend (angle)	Adjustable
Connector version	Integrated connector
Plate thickness	1,00 mm
Suitable for maintaining electrical function	<input type="checkbox"/>
Mounting perforation in base	<input checked="" type="checkbox"/>
NATO hole pattern	<input type="checkbox"/>
Change of direction	Horizontal
Rustproof steel, pickled	<input type="checkbox"/>
Side perforation	<input checked="" type="checkbox"/>
Wide-span version	<input type="checkbox"/>