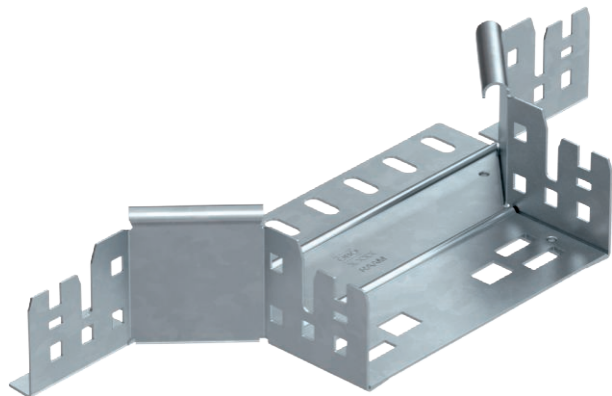


Technical data sheet

Add-on tee 60

Item no. 6041252



Add-on tee with quick connector system. For all cable tray types of 60 mm side height.

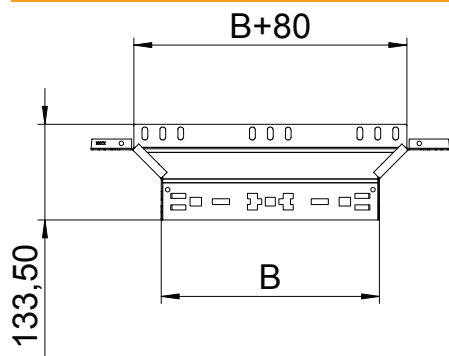


- St** Steel
- FT** Hot-dip galvanised

Master data

Item no.	6041252
Type	RAAM 615 FT
Description 1	Add-on tee
Description 2	with quick connector
Dimension	60x150
Material	Steel
Material symbol	St
Surface	Hot-dip galvanised
Surface to DIN	DIN EN ISO 1461
Surface symbol	FT
Smallest sales unit (VG)	1 Piece
Weight	47,50 kg/100 pc.

Technical data



Width	150,00 mm
Side height	60,00 mm
Dimension B	150,00 mm
Connector version	Integrated connector
Dimension	60x150 mm
Plate thickness	1,25 mm
Suitable for maintaining electrical function	<input type="checkbox"/>
Rail thickness	1,25 mm
Material thickness, floor plate	1,25 mm
NATO hole pattern	<input type="checkbox"/>
Rustproof steel, pickled	<input type="checkbox"/>
Wide-span version	<input type="checkbox"/>