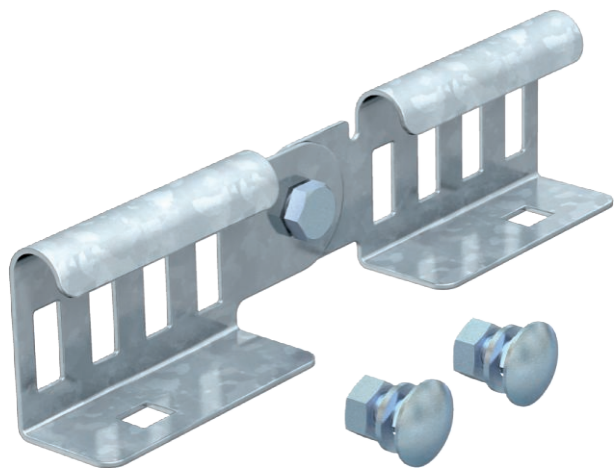


# Technical data sheet

## Adjustable connector 45

Item no. 6200929



Adjustable connector as external connector to join cable ladders and fittings with a side height of 45 mm and continuous rail perforation. Angle can be adjusted vertically.

The bolt fastening ensures the continuity of the equipotential bonding.

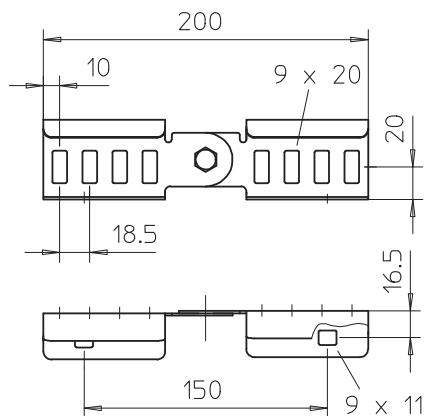


- St** Steel
- FT** Hot-dip galvanised

### Master data

Item no.	6200929
Type	LGVG 45 FT
Description 1	Adjustable connector
Description 2	for cable ladder
Dimension	49x200
Material	Steel
Material symbol	St
Surface	Hot-dip galvanised
Surface to DIN	DIN EN ISO 1461
Surface symbol	FT
Smallest sales unit (VG)	10 Piece
Weight	24,50 kg/100 pc.

### Technical data



Height	49,00 mm
Side height	45,00 mm
Dimension	49x200 mm
Plate thickness	1,50 mm
Suitable for cable tray	<input type="checkbox"/>
Suitable for mesh cable tray	<input type="checkbox"/>
Suitable for cable ladder	<input checked="" type="checkbox"/>
Adjustable connector, horizontal	<input type="checkbox"/>
Adjustable connector, vertical	<input checked="" type="checkbox"/>
Rustproof steel, pickled	<input type="checkbox"/>
Connection type	Screw connector