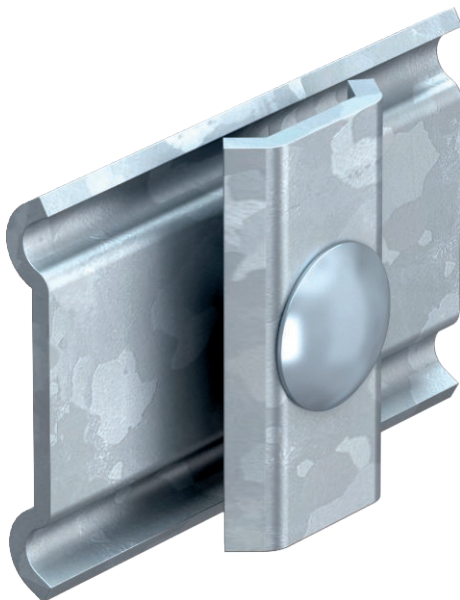


Technical data sheet

K 11/262 side connector

Item no. 6015107



Screwed version of joint connector for mesh cable trays.
Including screw of type FRS M6 x 20.

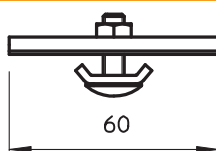
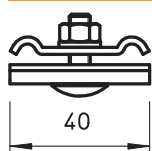


- St** Steel
- FT** Hot-dip galvanised

Master data

| | |
|--------------------------|---------------------|
| Item no. | 6015107 |
| Type | K 11 262 FT |
| Description 1 | Side connector |
| Description 2 | for mesh cable tray |
| Dimension | 60x40 |
| Material | Steel |
| Material symbol | St |
| Surface | Hot-dip galvanised |
| Surface to DIN | DIN EN ISO 1461 |
| Surface symbol | FT |
| Smallest sales unit (VG) | 25 Piece |
| Weight | 7,50 kg/100 pc. |

Technical data



| | |
|--|-------------------------------------|
| Length | 60,00 mm |
| Width | 40,00 mm |
| Height | 24,00 mm |
| Version | Straight connector |
| Suitable for cable tray | <input type="checkbox"/> |
| Suitable for mesh cable tray | <input checked="" type="checkbox"/> |
| Suitable for cable ladder | <input type="checkbox"/> |
| Suitable for maintaining electrical function | <input type="checkbox"/> |
| Adjustable connector, horizontal | <input type="checkbox"/> |
| Adjustable connector, vertical | <input type="checkbox"/> |
| Suitable for mesh cable tray wire | 3,90 - 4,90 mm |
| Rustproof steel, pickled | <input type="checkbox"/> |
| Connection type | Screw connector |