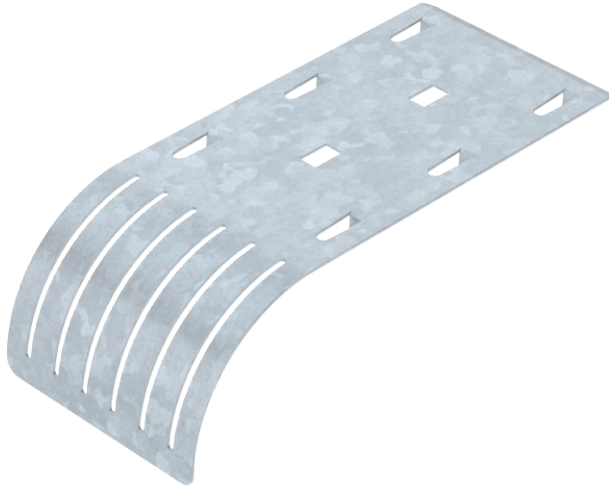


# Technical data sheet

## Exit plate

Item no. 6220142



Drop-out plate for mesh cable trays.

The exit plate allows compliance with specific bend radii, thus preventing possible cable breaks. Can be mounted in a lengthwise direction and at the side, can also be arranged next to each other for greater widths.

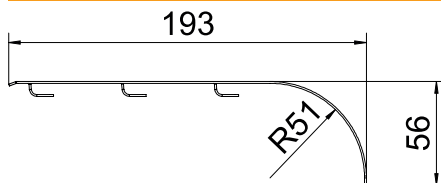


St	Steel
FT	Hot-dip galvanised

### Master data

Item no.	6220142
Type	KAB GR FT
Description 1	Cable exit plate
Description 2	for mesh cable tray
Dimension	192x85x51
Material	Steel
Material symbol	St
Surface	Hot-dip galvanised
Surface to DIN	DIN EN ISO 1461
Surface symbol	FT
Smallest sales unit (VG)	10 Piece
Weight	14,10 kg/100 pc.

### Technical data



Length	193,00 mm
Width	85,00 mm
Suitable for maintaining electrical function	<input type="checkbox"/>
Rustproof steel, pickled	<input type="checkbox"/>
Wide-span version	<input type="checkbox"/>

