

Technical data sheet

GKS 34 hold-down clamp

Item no. 6016855



Clamp for fixing mesh cable trays to wall or support brackets.
Including FRS M6 x 20 bolt with combination nut.

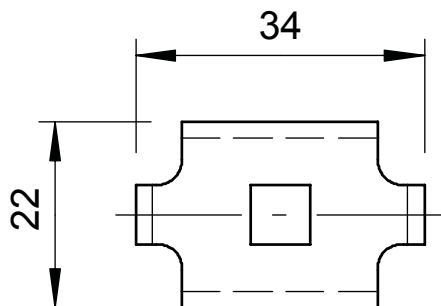


St	Steel
G	Electrogalvanised

Master data

Item no.	6016855
Type	GKS 34 G
Description 1	Hold-down clamp
Description 2	for mesh cable tray
Material	Steel
Material symbol	St
Surface	Electrogalvanised
Surface to DIN	EN ISO 19598 / EN ISO 4042
Surface symbol	G
Smallest sales unit (VG)	20 Piece
Weight	2,19 kg/100 pc.

Technical data



Dimension	34 x 22 mm
Suitable for cable tray	<input type="checkbox"/>
Suitable for mesh cable tray	<input checked="" type="checkbox"/>
Suitable for cable ladder	<input type="checkbox"/>
Rustproof steel, pickled	<input type="checkbox"/>
Connection type	Other