

Technical data sheet

GKS 34 hold-down clamp

Item no. 6016820



Hold-down clamp for fixing mesh cable trays to wall or support brackets.
Including FRS M6 x 20 bolt with flange nut.



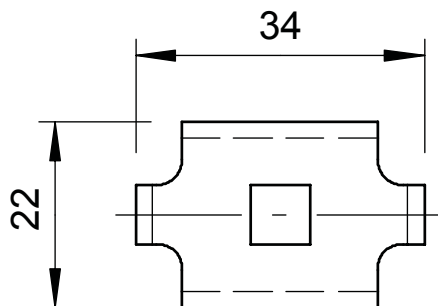
St Steel

FT Hot-dip galvanised

Master data

Item no.	6016820
Type	GKS 34 FT
Description 1	Hold-down clamp
Description 2	for mesh cable tray
Material	Steel
Material symbol	St
Surface	Hot-dip galvanised
Surface to DIN	DIN EN ISO 1461
Surface symbol	FT
Smallest sales unit (VG)	20 Piece
Weight	2,02 kg/100 pc.

Technical data



Dimension	34 x 22 mm
Suitable for cable tray	<input type="checkbox"/>
Suitable for mesh cable tray	<input checked="" type="checkbox"/>
Suitable for cable ladder	<input type="checkbox"/>
Rustproof steel, pickled	<input type="checkbox"/>
Connection type	Other