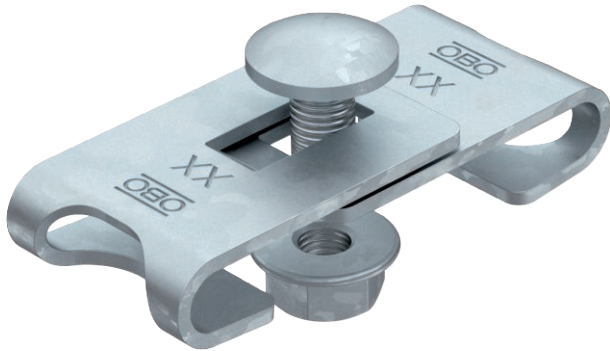


Technical data sheet

GEV 36 corner connector

Item no. 6016723



Corner connector for creation of mesh cable tray bend elements of different angles (bend creation on the construction site).

Including FRS M6 x 12 bolt with flange nut.



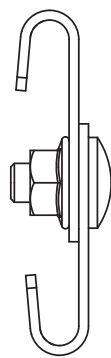
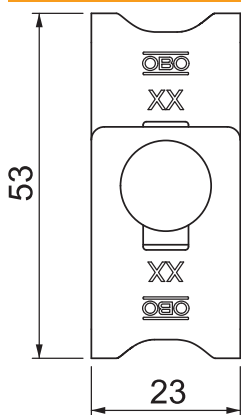
St Steel

FT Hot-dip galvanised

Master data

Item no.	6016723
Type	GEV 36 FT
Description 1	Corner connector
Description 2	for mesh cable tray
Material	Steel
Material symbol	St
Surface	Hot-dip galvanised
Surface to DIN	DIN EN ISO 1461
Surface symbol	FT
Smallest sales unit (VG)	20 Piece
Weight	3,16 kg/100 pc.

Technical data



Length	56,00 mm
Width	23,00 mm
Height	16,00 mm
Dimension	42-54 x 23 mm
Version	Corner connector
Suitable for cable tray	<input type="checkbox"/>
Suitable for mesh cable tray	<input checked="" type="checkbox"/>
Suitable for cable ladder	<input type="checkbox"/>
Suitable for maintaining electrical function	<input type="checkbox"/>
Suitable for mesh cable tray wire	3,90 - 4,90 mm
Rustproof steel, pickled	<input type="checkbox"/>
Connection type	Screw connector