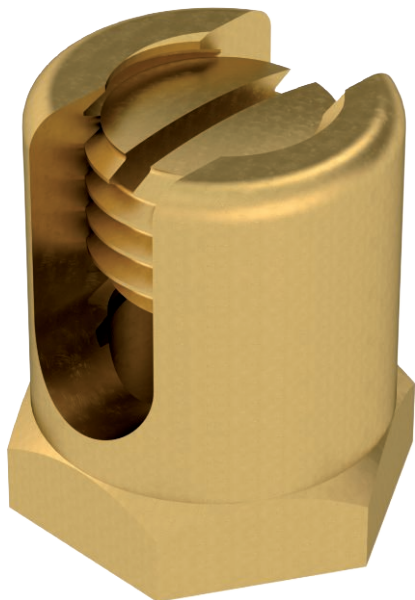


# Technical data sheet

## Earthing terminal with fastening thread

Item no. 6404006



Earthing terminal for fastening the equipotential bonding wire to the cable support system. Suitable for conductor cross sections of 4–50 mm<sup>2</sup>.

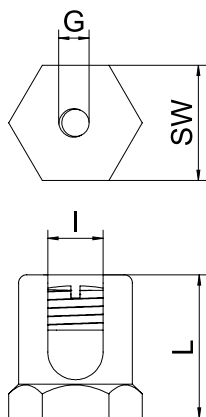


 Brass

### Master data

Item no.	6404006
Type	EKL 25 M6
Description 1	Earthing terminal
Description 2	with fastening thread M6
Dimension	25mm <sup>2</sup>
Material	Brass
Material symbol	CuZn
Smallest sales unit (VG)	50 Piece
Weight	3,10 kg/100 pc.

### Technical data



Length	25,00 mm
Dimension L	22,00 mm
Dimension I	8,00 mm
Suitable for cable tray	<input checked="" type="checkbox"/>
Suitable for mesh cable tray	<input type="checkbox"/>
Suitable for cable ladder	<input checked="" type="checkbox"/>
Suitable for maintaining electrical function	<input type="checkbox"/>
Thread	M6
With screw accessories	<input type="checkbox"/>
Cross-section	50,00 mm <sup>2</sup>
Rustproof steel, pickled	<input type="checkbox"/>
Connection type	With pin/drill hole