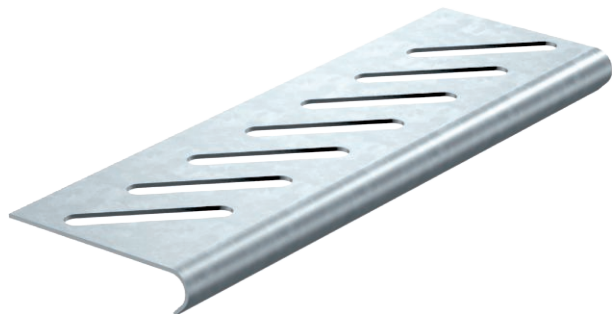


Technical data sheet

Bottom end plate

Item no. 7083300



Bottom end plate for floor reinforcement at the ends of the cable tray and as cable protection.
For fastening, please order screws, type FRSB M6x12, separately.



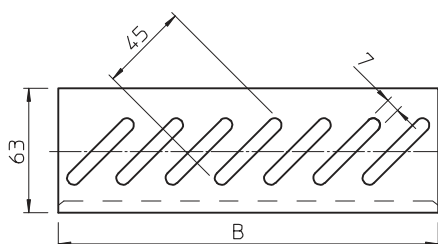
St	Steel
FS	Strip galvanised

Product text, scope of delivery	For each floor end plate, the appropriate number of truss-head bolts of type FRS B M6 x 12 should be ordered separately.
---------------------------------	--

Master data

Item no.	7083300
Type	BEB 300 FS
Description 1	Bottom end plate
Description 2	for cable tray
Dimension	B300mm
Material	Steel
Material symbol	St
Surface	Strip galvanised
Surface to DIN	DIN EN 10346
Surface symbol	FS
Smallest sales unit (VG)	1 Piece
Weight	14,10 kg/100 pc.

Technical data



Width	300,00 mm
Dimension B	300,00 mm
Suitable for maintaining electrical function	<input checked="" type="checkbox"/>
Rustproof steel, pickled	<input type="checkbox"/>
Wide-span version	<input type="checkbox"/>