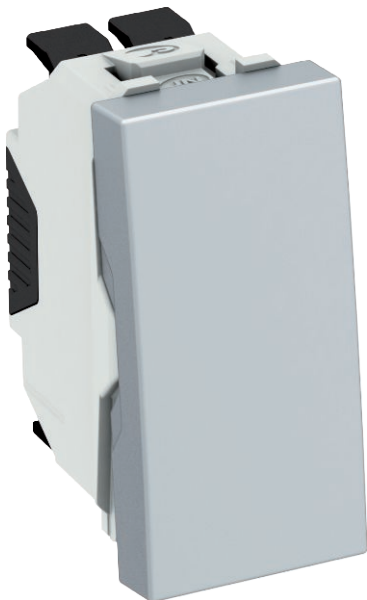


# Technical data sheet

## One-way/changeover switch, 1/2 module

Item no. 6120924



Changeover switch 1-pin, 10 A, 250 V~, with screwless terminals.

For installation in Rapid 45 device installation ducts, Rapid 80 device installation ducts, service poles and underfloor systems.

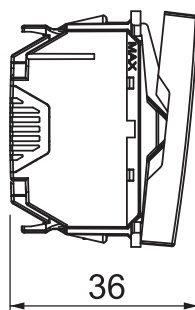
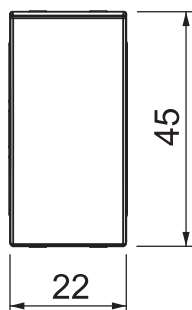


**PC** Polycarbonate

### Master data

Item no.	6120924
Type	WS-UB AL0.5
Description 1	Two-way switch
Dimension	10 A, 250 V
Colour	Aluminium-painted
Material	Polycarbonate
Material symbol	PC
Smallest sales unit (VG)	1 Piece
Weight	1,80 kg/100 pc.

### Technical data



Width	22,00 mm
Height	45,00 mm
Depth	36,00 mm
Dimension	22,5 x 45 mm
Connection type	Screwless terminal
Surface version	Matt
Lighting	No
Labelling panel	<input type="checkbox"/>
Fastening type	Lock
Halogen-free	<input checked="" type="checkbox"/>
Warning light	<input type="checkbox"/>
Mounting type	Device installation duct
Nominal voltage	250,00 V
Nominal current	10,00 A
Protection rating	IP20
Circuit type	Changeover switch
Text box/labelling area	No