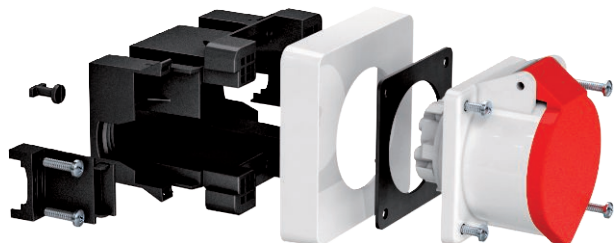


Technical data sheet

CEE socket unit, single, 16 A

Item no. 6119483



Accessory mounting box for the installation of a 3 or 5-pole CEE socket, 16 A or 32 A.

Scope of delivery:

- 1 front-locking accessory mounting box for 4-point fastening track of 52 x 52 mm to 70 x 70 mm
- 1 cover frame in pure white for hiding the fastening technology
- 2 external strain reliefs for jacketed cables of up to Ø 18 mm
- 2 sash locks for optional fastening to trunking bases with C rail
- 1 CEE socket 16 A with mounting accessories

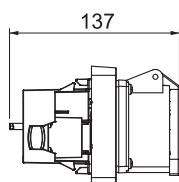
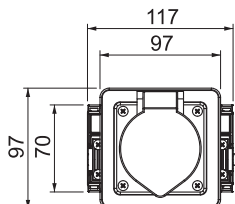
For installation in Rapid 80 device installation trunking and ISS service poles.

PA Polyamide

Master data

Item no.	6119483
Type	71GDCEE16
Description 1	CEE accessory mounting box
Description 2	with CEE socket 16 A
Dimension	118x98x125
Colour	Graphite black
RAL number	9011
Material	Polyamide
Material symbol	PA
Smallest sales unit (VG)	1 Piece
Weight	31,10 kg/100 pc.

Technical data



Number of units	1
Version for	Closed
Fastening track	Other
Device type	CEE
Halogen-free	<input checked="" type="checkbox"/>
With connection compartment	<input checked="" type="checkbox"/>
Strain relief option	<input checked="" type="checkbox"/>