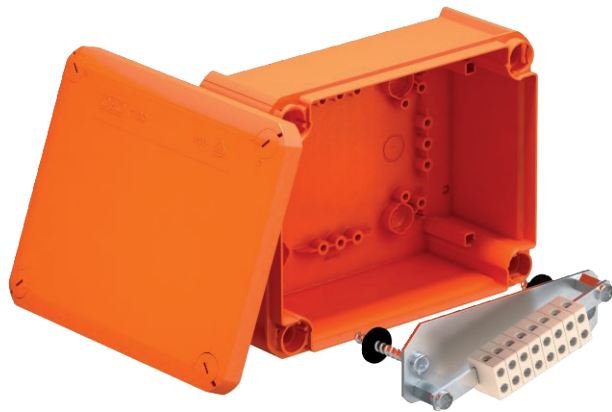


# Technical data sheet

## FireBox T160E for data technology with internal fastening

Item no. 7205520



Halogen-free junction box, approved for the maintenance of electrical functionality according to DIN 4102 Part 12. Maintenance of electrical functionality classes E30 to E90.

Colour: Pastel orange.

Including pre-mounted connection unit made of high temperature-resistant special ceramic with fire protection screw ties for anchorless fastening.

Nominal cross-section: data cables with 0.8 mm wire Ø. Up to 6 rigid copper wires (0.5 mm<sup>2</sup>) possible on each terminal.

High protection rating IP66, impact resistance class IK06.

Details on the cable types and manufacturers can be found in the general construction test certificate of the material testing institute NRW, Erwitte.

Number of terminals without protective conductor terminal.

Internal clearance: 176x135x67 mm.

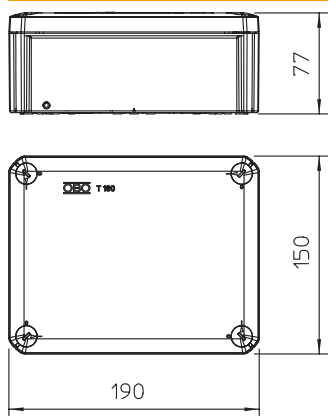
E30 E90 IP 66 E60

PP Polypropylene

### Master data

|                          |                          |
|--------------------------|--------------------------|
| Item no.                 | 7205520                  |
| Type                     | T 160 E 4-8D             |
| Description 1            | Junction box             |
| Description 2            | for function maintenance |
| Dimension                | 190x150x77               |
| Colour                   | Pastel orange            |
| RAL number               | 2003                     |
| Material                 | Polypropylene            |
| Material symbol          | PP                       |
| Smallest sales unit (VG) | 1 Piece                  |
| Weight                   | 46,50 kg/100 pc.         |

### Technical data



|                                |                                     |
|--------------------------------|-------------------------------------|
| Length                         | 190,00 mm                           |
| Width                          | 150,00 mm                           |
| Height                         | 77,00 mm                            |
| Clear internal dimensions      | 176x135x67 mm                       |
| Expandable                     | <input type="checkbox"/>            |
| No. of entries                 | 0                                   |
| Number of terminals            | 8                                   |
| Type of housing penetration    | Pre-marking                         |
| Measured insulation voltage Vi | 690,00 V                            |
| Equipment                      | Terminal                            |
| Cover                          | Not transparent                     |
| Cover fastening                | Screwed                             |
| Entry from rear                | <input type="checkbox"/>            |
| Shape                          | Square                              |
| Function maintenance (ETIM)    | E 90                                |
| Halogen-free                   | <input checked="" type="checkbox"/> |
| With screening                 | <input type="checkbox"/>            |
| With cover                     | <input checked="" type="checkbox"/> |
| Nominal cross section          | 4,00 mm <sup>2</sup>                |
| Nominal voltage                | 660,00 V                            |
| Protection rating              | IP65                                |
| Sealable                       | <input type="checkbox"/>            |
| Impact-resistant               | <input type="checkbox"/>            |
| Weatherproof                   | <input type="checkbox"/>            |