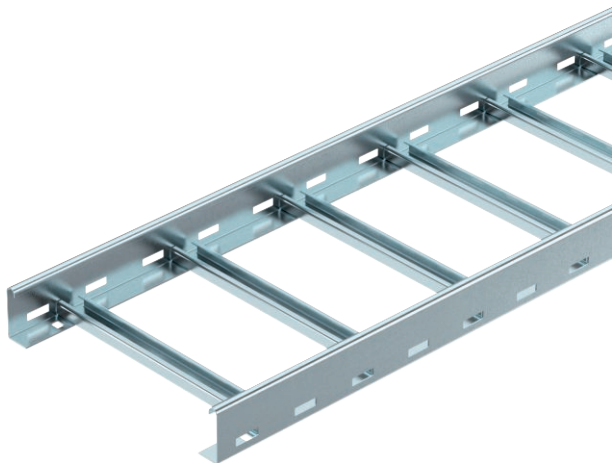


# Technical data sheet

## LG 60 cable ladder, 6 m VSF

Item no. 6207509



Cable ladder for the horizontal routing of cables. Can be used as a standard support structure for the maintenance of electrical functionality according to DIN 4102 Part 12. Maintenance of electrical function classes E30 to E90. With riveted C profile rung, open in an upward direction.

E30 E90 E60

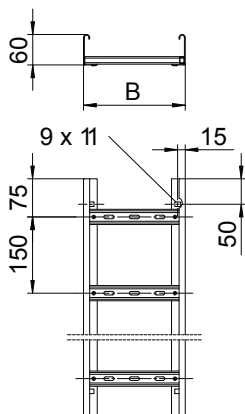
St Steel

FS Strip galvanised

### Master data

Item no.	6207509
Type	LG 640 VSF6000FS
Description 1	Cable ladder function maint.
Description 2	rungs distance 150 mm
Dimension	60x400x6000
Material	Steel
Material symbol	St
Surface	Strip galvanised
Surface to DIN	DIN EN 10346
Surface symbol	FS
Smallest sales unit (VG)	6 m
Weight	407,17 kg/100 m

### Technical data



Length	6.000,00 mm
Width	400,00 mm
Side height	60,00 mm
Dimension B	400,00 mm
Rung version	Profile perforated
Side rail version	Profile (open)
Fastening of rung	Blind riveted
Suitable for maintaining electrical function	<input checked="" type="checkbox"/>
Rail thickness	1,50 mm
Usable cross-section	19.800,00 mm <sup>2</sup>
Usable cross-section	198,00 cm <sup>2</sup>
Rustproof steel, pickled	<input type="checkbox"/>
Side perforation	<input checked="" type="checkbox"/>
Rung distance	150,00 mm
Wide-span version	<input type="checkbox"/>