

Technical data sheet

Spacer sleeve for insulated ceilings

Item no. 7205906



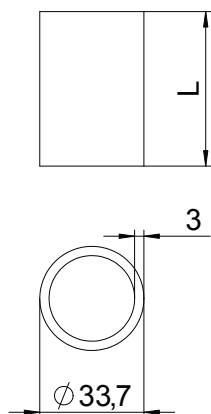
Spacer sleeve for mounting suspension components under insulated ceilings. They prevent the insulation from pushing in when the fastening screws are tightened. Burr arm, galvanised internally and externally.

St	Steel
FT	Hot-dip galvanised

Master data

Item no.	7205906
Type	DHI 110
Description 1	Spacer sleeve
Description 2	for insulated ceilings
Dimension	33,7x110x3mm
Material	Steel
Material symbol	St
Surface	Hot-dip galvanised
Surface to DIN	DIN EN ISO 1461
Surface symbol	FT
Smallest sales unit (VG)	12 Piece
Weight	24,60 kg/100 pc.

Technical data



Length	110,00 mm
Dimension L	110,00 mm
Outer-Ø	33,70 mm
Inner diameter	27,70 mm