

# Technical data sheet

## Spacer sleeve for insulated ceilings

Item no. 7205905



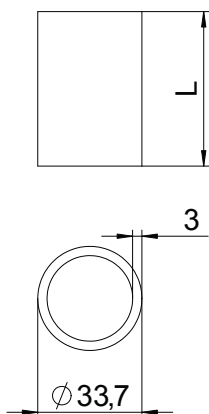
Spacer sleeve for mounting suspension components under insulated ceilings. They prevent the insulation from pushing in when the fastening screws are tightened. Burr arm, galvanised internally and externally.

<b>St</b>	Steel
<b>FT</b>	Hot-dip galvanised

### Master data

Item no.	7205905
Type	DHI 100
Description 1	Spacer sleeve
Description 2	for insulated ceilings
Dimension	33,7x100x3mm
Material	Steel
Material symbol	St
Surface	Hot-dip galvanised
Surface to DIN	DIN EN ISO 1461
Surface symbol	FT
Smallest sales unit (VG)	14 Piece
Weight	23,40 kg/100 pc.

### Technical data



Length	100,00 mm
Dimension L	100,00 mm
Outer-Ø	33,70 mm
Inner diameter	27,70 mm