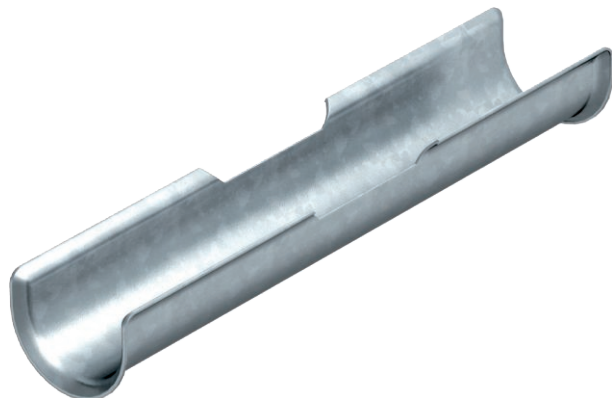


Technical data sheet

Long trough

Item no. 1195883



In addition to the clamp clip, to increase the support area for cables with integrated maintenance of electrical function, a long trough (L = 200 mm) is mounted.

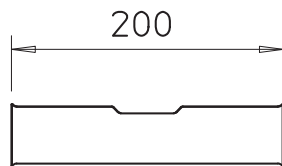
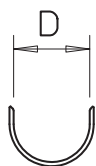


St	Steel
FS	Strip galvanised

Master data

Item no.	1195883
Type	2058 LW 62
Description 1	Long trough
Description 2	for clamp clip 58-64 mm
Dimension	56-62, 200mm
Material	Steel
Material symbol	St
Surface	Strip galvanised
Surface to DIN	DIN EN 10346
Surface symbol	FS
Smallest sales unit (VG)	25 Piece
Weight	19,70 kg/100 pc.

Technical data



Counter-trough/clip version	Long trough
Clamping range D	56,00 - 62,00 mm
for clip 2056/M	58,00 - 64,00