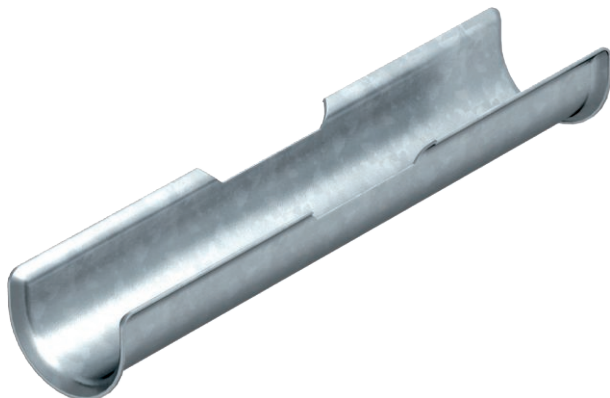


# Technical data sheet

## Long trough

Item no. 1195875



In addition to the clamp clip, to increase the support area for cables with integrated maintenance of electrical function, a long trough (L = 200 mm) is mounted.

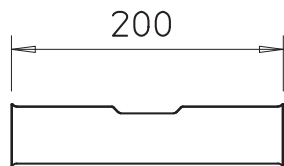
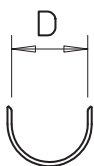


<b>St</b>	Steel
<b>FS</b>	Strip galvanised

### Master data

Item no.	1195875
Type	2058 LW 56
Description 1	Long trough
Description 2	for clamp clip 52-58 mm
Dimension	50-56, 200mm
Material	Steel
Material symbol	St
Surface	Strip galvanised
Surface to DIN	DIN EN 10346
Surface symbol	FS
Smallest sales unit (VG)	25 Piece
Weight	17,80 kg/100 pc.

### Technical data



Counter-trough/clip version	Long trough
Clamping range D	50,00 - 56,00 mm
for clip 2056/M	52,00 - 58,00