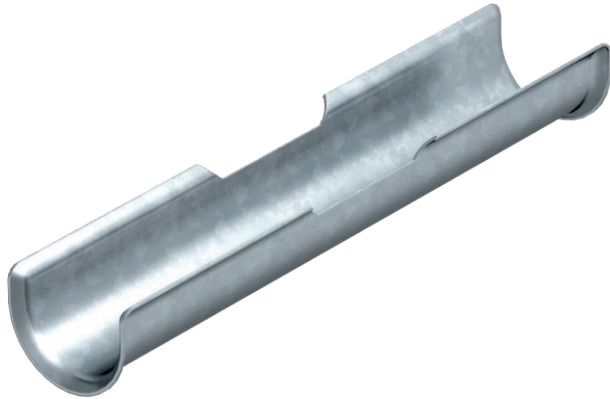


# Technical data sheet

## Long trough

Item no. 1195867



In addition to the clamp clip, to increase the support area for cables with integrated maintenance of electrical function, a long trough (L = 200 mm) is mounted.



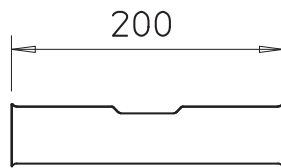
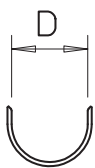
**St** Steel

**FS** Strip galvanised

### Master data

Item no.	1195867
Type	2058 LW 50
Description 1	Long trough
Description 2	for clamp clip 46-52 mm
Dimension	44-50, 200mm
Material	Steel
Material symbol	St
Surface	Strip galvanised
Surface to DIN	DIN EN 10346
Surface symbol	FS
Smallest sales unit (VG)	25 Piece
Weight	16,20 kg/100 pc.

### Technical data



Counter-trough/clip version	Long trough
Clamping range D	44,00 - 50,00 mm
for clip 2056/M	46,00 - 52,00