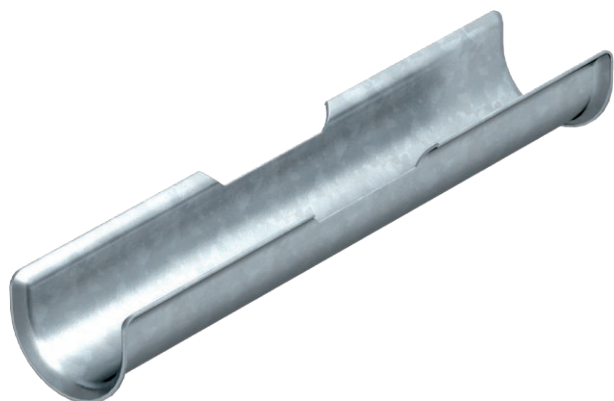


# Technical data sheet

## Long trough

Item no. 1195832



In addition to the clamp clip, to increase the support area for cables with integrated maintenance of electrical function, a long trough (L = 200 mm) is mounted.

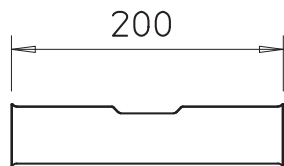
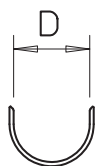


<b>St</b>	Steel
<b>FS</b>	Strip galvanised

### Master data

Item no.	1195832
Type	2058 LW 32
Description 1	Long trough
Description 2	for clamp clip 28-34 mm
Dimension	26-32, 200mm
Material	Steel
Material symbol	St
Surface	Strip galvanised
Surface to DIN	DIN EN 10346
Surface symbol	FS
Smallest sales unit (VG)	25 Piece
Weight	11,00 kg/100 pc.

### Technical data



Counter-trough/clip version	Long trough
Clamping range D	26,00 - 32,00 mm
for clip 2056/M	28,00 - 34,00