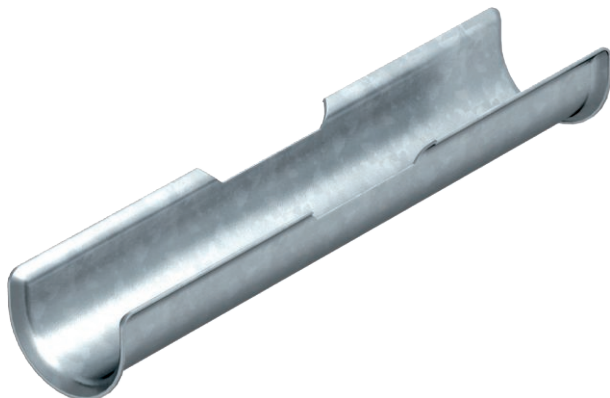


# Technical data sheet

## Long trough

Item no. 1195808



In addition to the clamp clip, to increase the support area for cables with integrated maintenance of electrical function, a long trough (L = 200 mm) is mounted.

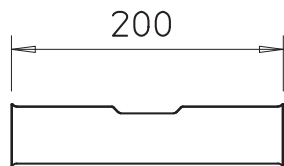
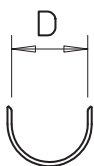


<b>St</b>	Steel
<b>FS</b>	Strip galvanised

### Master data

Item no.	1195808
Type	2058 LW 14
Description 1	Long trough
Description 2	for clamp clip 12-16 mm
Dimension	10-14, 200mm
Material	Steel
Material symbol	St
Surface	Strip galvanised
Surface to DIN	DIN EN 10346
Surface symbol	FS
Smallest sales unit (VG)	50 Piece
Weight	5,34 kg/100 pc.

### Technical data



Counter-trough/clip version	Long trough
Clamping range D	10,00 - 14,00 mm
for clip 2056/M	12,00 - 16,00