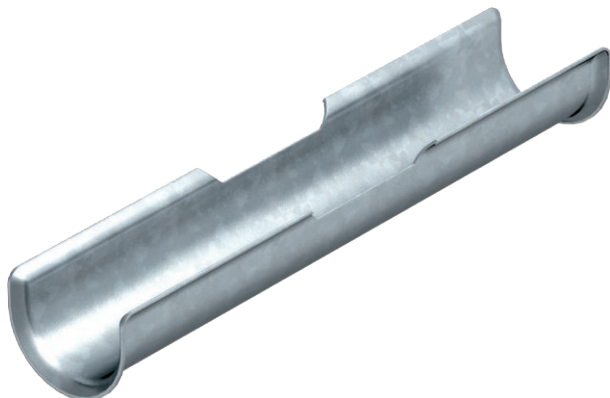


Technical data sheet

Long trough

Item no. 1195794



In addition to the clamp clip, to increase the support area for cables with integrated maintenance of electrical function, a long trough (L = 200 mm) is mounted.

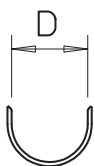


St	Steel
FS	Strip galvanised

Master data

Item no.	1195794
Type	2058 LW 10
Description 1	Long trough
Description 2	for clamp clip 8-12 mm
Dimension	6-10, 200mm
Material	Steel
Material symbol	St
Surface	Strip galvanised
Surface to DIN	DIN EN 10346
Surface symbol	FS
Smallest sales unit (VG)	50 Piece
Weight	4,00 kg/100 pc.

Technical data



Counter-trough/clip version	Long trough
Clamping range D	6,00 - 10,00 mm
for clip 2056/M	8,00 - 12,00