

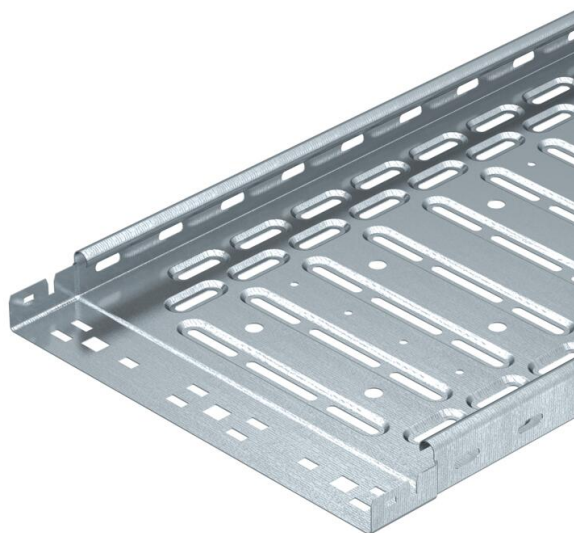
# Technical data sheet

## Cable tray RKS-Magic®



Item number: 6047417

Chalfant Item Nb.



RKSM 35 = Efficient magic cable tray system with 35 mm side height. Cable tray with quick connection system, including all the relevant connection components for time-saving and economic installation, with beaded straight base perforation, 7 x 20 mm, for bracket mounting and, from the width 200 mm, with 7 x 32 mm transverse beading for cable ventilation and simplified mounting. With 11 mm perforation for direct threaded rod suspension. Continuous side perforation, 7 x 20 mm, as connector perforation.

The stock length is 35 mm, the usable length when combined is 35 mm.

The spring element FED 35 can be ordered separately as an accessory part (spare) for the cable tray RKS-Magic with a side height of 35 mm under the article number 6068853.

The continuous equipotential bonding is guaranteed without additional components.

VDE tested cable tray system.

Magnetic shield insulation without cover 20 dB, with cover 50 dB.



St

Steel

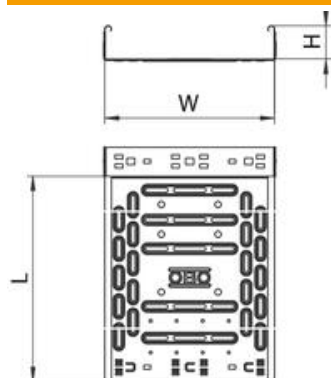
FS

Strip galvanized

### Master data

Type	RKSM 310 FS
Manufacturer	OBO
Colour	zinc
Material	Steel
Surface	Strip-galvanized
Surface standard	DIN EN 10346
Smallest sales unit	3
Unit of quantity	Metres
Weight	104.328 kg
Weight unit	lbs/100 pcs.

### Dimensions



Length	3,050 mm
Length	10 ft
Width	100 mm
Width	4 in
Height	35 mm
Height	1 in
Plate thickness	0.03 in
Plate thickness	0.75 mm
Dimension B	100 mm
Dimension y	50 mm

# Technical data sheet

## Cable tray RKS-Magic®



Item number: 6047417

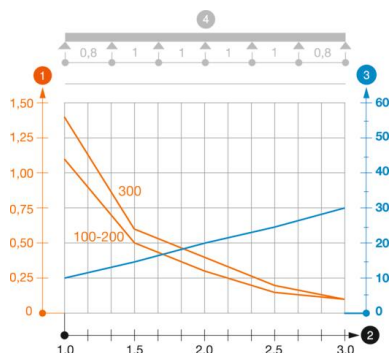
Chalfant Item Nb.

### Features/properties/dimensions

Connector version	Integrated connector
Mounting system fastening type	Floor Ceiling Wall
Walkable	no
Base perforation	1
Maintain electrical functions	no
With cover	no
Mounting perforation in base	yes
NATO hole pattern	no
Usable cross-section	33 cm <sup>2</sup>
Usable cross-section	3300 mm <sup>2</sup>
Rustproof steel, pickled	no
Side perforation	yes
Wide-span version	no
Magnetic shield insulation with cover	50 dB
Magnetic shield insulation without cover	20 dB
Load test type according to IEC 61537	Type II

### Loads

Insertable support spacings, min.	1 m
Insertable support spacings, max.	3 m
Support spacing 1.0 m	1.1 kN/m
Support spacing 1.5 m	0.5 kN/m
Support spacing 2.0 m	0.3 kN/m
Support spacing 2.5 m	0.15 kN/m
Support spacing 3.0 m	0.1 kN/m



#### Load diagram, cable tray, type RKSM 35

- 1 Permitted cable tray/ladder load in kN/m without man load
- 2 Support width in m
- 3 Rail bend in mm at permitted kN/m
- 4 Load scheme during testing
- Load curve with cable tray/ladder width in mm
- Strut bend curve according to support width