

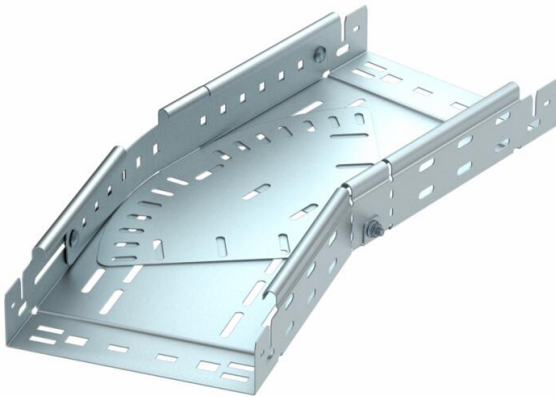
Technical data sheet

Magic bend, variable 60 FS

Item number: 6040486



Magic bend 0°–90°, variable, with quick connector system. For all cable tray types of 60 mm side height.



St Steel

FS Strip galvanized

Master data

Item number	6040486
Type	RBMV 630 FS
Description 1	Variable bend
Description 2	with quick connector
Manufacturer	OBO
Dimension	60x300
Colour	zinc
Material	Steel
Surface	Strip galvanized
Surface standard	DIN EN 10346
Smallest sales unit	1
Unit of quantity	Piece
Weight	291.7 kg
Weight unit	kg/100 pc.
CO2 Footprint (GWP) Cradle-to-Gate	11,5501 kg CO2e / 1 Piece

Technical data sheet

Magic bend, variable 60 FS

Item number: 6040486



Dimensions

Width	300 mm
Width	12 in
Height	60 mm
Height	2 in
Plate thickness	1.25 mm
Dimension B	300 mm
Dimension L	2.1 ft
Dimension L	640 mm

Technical data

Bend (angle)	Adjustable
Connector version	Integrated connector
Maintain electrical functions	yes
Mounting perforation in base	yes
NATO hole pattern	no
Change of direction	Horizontal
Rustproof steel, pickled	no
Side perforation	yes
Wide-span version	no
Type of connector, cable support system	Click fastening