

# Technical data sheet

## Armoured steel pipe without thread, black

Item number: 2046571



Electrical installation pipe without threaded ends according to EN 61386-1 for mechanical protection of cables. With burr-free inner wall.



- St** Steel
- PE50** PES50 - Polyester/epoxy

### Master data

|                                    |                          |
|------------------------------------|--------------------------|
| Item number                        | 2046571                  |
| Type                               | S63W SW                  |
| Description 1                      | Plug-in conduit          |
| Description 2                      | without thread           |
| Manufacturer                       | OBO                      |
| Dimension                          | Ø63, 3000mm              |
| Colour                             | Jet black; RAL 9005      |
| Material                           | Steel                    |
| Surface                            | PES50 - Polyester/epoxy  |
| Surface standard                   |                          |
| Smallest sales unit                | 9                        |
| Unit of quantity                   | Metre                    |
| Weight                             | 223 kg                   |
| Weight unit                        | kg/100 m                 |
| CO2 Footprint (GWP) Cradle-to-Gate | 4,2906 kg CO2e / 1 Meter |

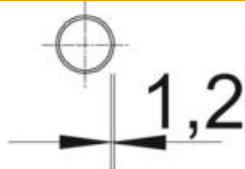
# Technical data sheet

Armoured steel pipe without thread, black

Item number: 2046571



## Dimensions



|                  |          |
|------------------|----------|
| Length           | 3,000 mm |
| Dimension D      | 63 mm    |
| Dimension L      | 3,000 mm |
| Dimension m (mm) | M63      |
| Dimension t      | 1.2 mm   |

# Technical data sheet

## Armoured steel pipe without thread, black

Item number: 2046571



### Technical data

|  |                       |
|--|-----------------------|
| Surface-mounted                                | yes                   |
| Pipe version                                   | Rigid without thread  |
| Concrete installation                          | yes                   |
| Bending behaviour                              | rigid                 |
| Pressure resistance                            | Heavy (1,250 N)       |
| Use temperature, max.                          | + 250 °C              |
| Use temperature, min.                          | - 45 °C               |
| Cavity wall installation                       | yes                   |
| Installation on wood                           | yes                   |
| Installation in the earth                      | no                    |
| Installation outdoors                          | no                    |
| Classification code                            | 44561                 |
| Machines and system installation               | yes                   |
| With sleeve                                    | no                    |
| Brushed surface                                | no                    |
| Polished surface                               | no                    |
| Impact resistance                              | Heavy (2.0 kg/300 mm) |
| Permitted temperature range, max.              | 250 °C                |
| Permitted temperature range, min.              | -45 °C                |
| Underfloor installation (bitumen, hot asphalt) | yes                   |
| Underfloor installation (screed)               | yes                   |
| Concealed                                      | yes                   |