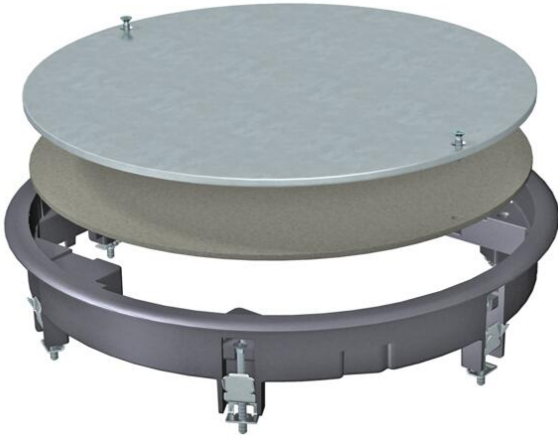


Technical data sheet

ZESRA7 inspection cover

Item number: 7406824



Draw box insert for blank closing of a round mounting opening of nominal size R7 in trunking systems and in raised and cavity floors. With universal fastening bracket.

Carpet protection frame made of die-cast aluminium.



AIG Cast aluminium

Master data		
Item number	7406824	
Type	ZESRA7 10U	
Description 1	Junction box insert	
Description 2	for universal mounting	
Manufacturer	OBO	
Dimension	Ø274x54,3	
Material	Cast aluminium	
Smallest sales unit	1	
Unit of quantity	Piece	
Weight	225.8 kg	
Weight unit	kg/100 pc.	
CO2 Footprint (GWP) Cradle-to-Gate	14,8174 kg CO2e / 1 Piece	

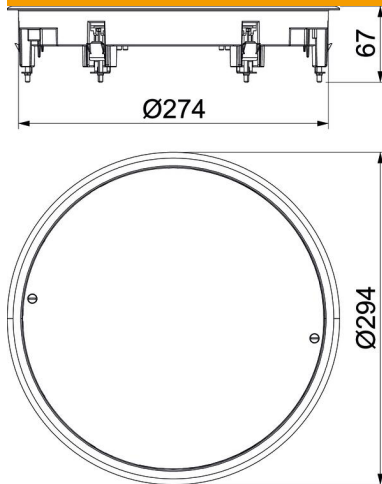
Technical data sheet

ZESRA7 inspection cover

Item number: 7406824



Dimensions



Length	294 mm
Width	294 mm
Height	54 mm

Technical data

Number of installable devices	0
Version for	Round
Floor care	Dry
Floor height, min.	64 mm
Suitable for raised floor installation	yes
Suitable for screed-covered underfloor ducts	yes
Suitable for cavity floor installation	yes
Suitable for wet care	no
Suitable for underfloor box	350
Suitable for underfloor ducts	yes
Nominal size for device installation units	R7
Frame version	Carpet protection frame
Vertical load, large area	to 10,000 N
Vertical load, small area	to 3,000 N
Floor covering thickness	10 mm