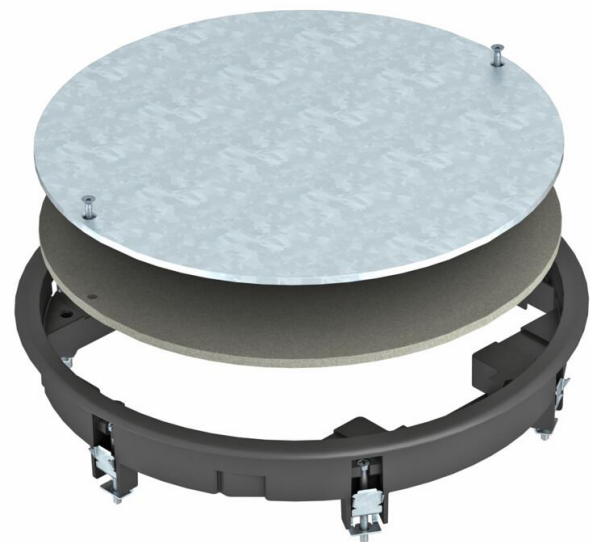


Technical data sheet

ZESR7 inspection cover

Item number: 7406792



Junction box insert for blank closing of a round mounting opening of nominal size R7 in trunking systems and in raised and cavity floors for indoor use. With universal fixing bracket.

Polyamide carpet protection frame.



PA Polyamide

| Master data | | |
|-----------------------------------|--------------------------|--|
| Item number | 7406792 | |
| Description 1 | Junction box insert | |
| Description 2 | for universal mounting | |
| Manufacturer | OBO | |
| Dimension | Ø294x33 | |
| Colour | Graphite black; RAL 9011 | |
| Material | Polyamide | |
| Smallest sales unit | 1 | |
| Unit of quantity | Piece | |
| Weight | 225.8 kg | |
| Weight unit | kg/100 pc. | |
| CO Footprint (GWP) Cradle-to-Gate | 9,2605 kg COe / 1 Piece | |

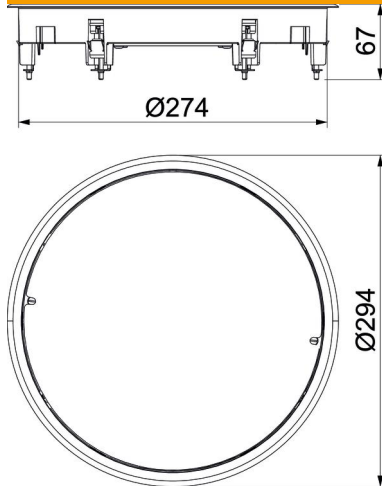
Technical data sheet

ZESR7 inspection cover

Item number: 7406792



Dimensions



| | |
|--------|--------|
| Length | 294 mm |
| Width | 294 mm |
| Height | 54 mm |

Technical data

| | |
|--|-------------------------|
| Number of installable devices | 0 |
| Version for | Round |
| Floor care | Dry |
| Floor height, min. | 64 mm |
| Suitable for raised floor installation | yes |
| Suitable for screed-covered underfloor ducts | yes |
| Suitable for cavity floor installation | yes |
| Suitable for wet care | no |
| Suitable for underfloor box | 350 |
| Suitable for underfloor ducts | yes |
| Nominal size for device installation units | R7 |
| Frame version | Carpet protection frame |
| Vertical load, large area | to 5,000 N |
| Vertical load, small area | to 3,000 N |
| Floor covering thickness | 10 mm |