

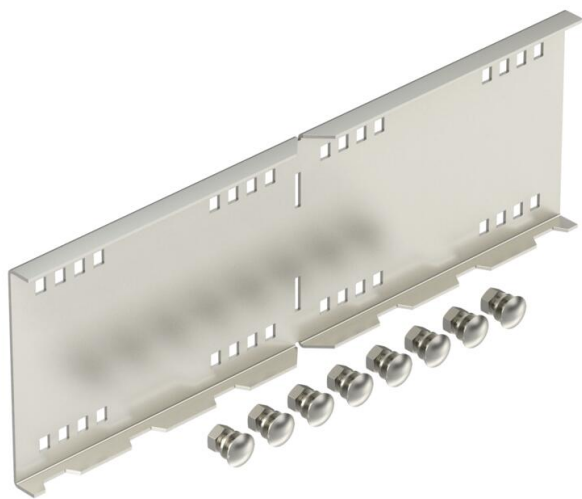
Technical data sheet

Straight and angle connector A2

Item number: 6227836



Angle connector for wide span cable trays and ladders with a side height of 160 mm.
Including appropriate bolts, washers and nuts.



- A2Stainless steel
- 2BBright, treated

Master data

Item number	6227836
Type	WRWVK 160 A2
Description 1	Angle connector
Description 2	for wide span system 160
Manufacturer	OBO
Dimension	160x500
Colour	stainless steel
Material	Stainless steel
Surface	Bright, treated
Surface standard	
Smallest sales unit	2
Unit of quantity	Piece
Weight	199.8 kg
Weight unit	kg/100 pc.
CO2 Footprint (GWP) Cradle-to-Gate	11,6452 kg CO2e / 1 Piece

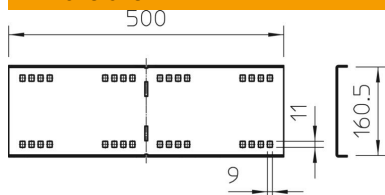
Technical data sheet

Straight and angle connector A2

Item number: 6227836



Dimensions



Length	500 mm
Width	20 mm
Height	160 mm
Plate thickness	2.5 mm

Technical data

Version for	Angle connector
Maintain electrical functions	no
Suitable for mesh cable tray	no
Suitable for cable ladder	yes
Suitable for cable tray	yes
Suitable for cable tray system height	160 mm
Adjustable connector, horizontal	no
Articulated connector, vertical	no
Rustproof steel, pickled	no
Connection type	Screw connector