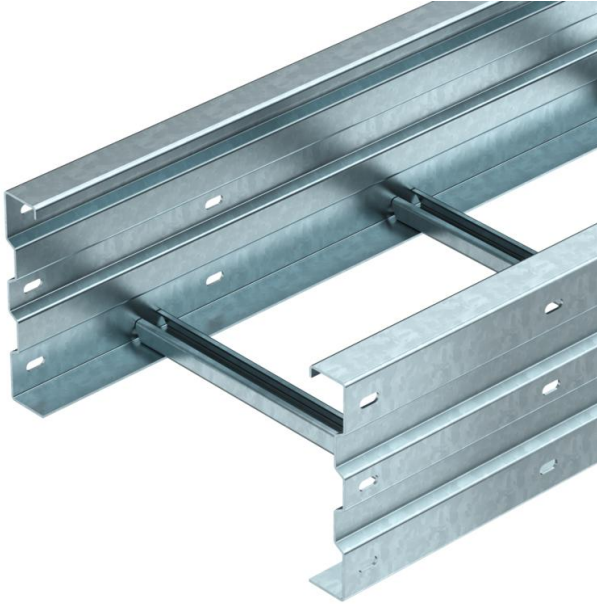


Technical data sheet

WKL 200 FT wide span cable ladder

Item number: 6232104



Wide span cable ladder with 200 mm side height.
Straight connectors of type WRVL 200 should be ordered separately and in the appropriate quantity.
Magnetic shield insulation without cover 10 dB, with cover 15 dB.



St

Steel

FT

Hot-dip galvanised

Master data

Item number	6232104
Description 1	Wide span cable ladder
Manufacturer	OBO
Dimension	200x300x6000
Colour	zinc
Material	Steel
Surface	Hot-dip galvanised
Surface standard	DIN EN ISO 1461
Smallest sales unit	6
Unit of quantity	Metre
Weight	1358.334 kg
Weight unit	kg/100 m
CO Footprint (GWP) Cradle-to-Gate	27,6248 kg COe / 1 Meter

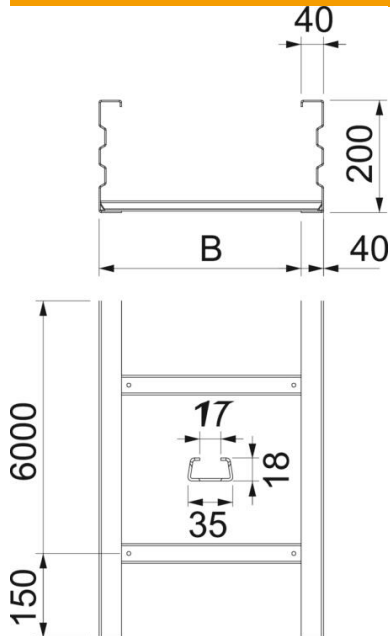
Technical data sheet

WKL 200 FT wide span cable ladder

Item number: 6232104



Dimensions



Dimension	200x300
Length	6,000 mm
Width	300 mm
Height	200 mm
Dimension B	300 mm
Dimension L	6,000 mm
Rung slot dimension	17.00

Technical data

Version of the rungs	Profile unperforated
Maintain electrical functions	no
Usable cross-section	524 cm ²
Usable cross-section	52400 mm ²
Rustproof steel, pickled	no
Side perforation	yes
Wide-span version	yes
Rail thickness	2.5 mm

Technical data sheet

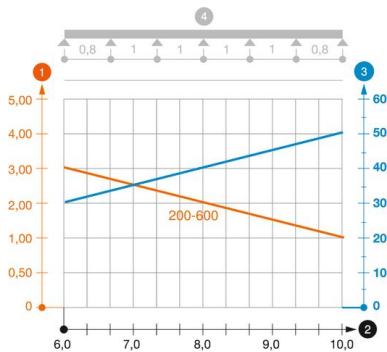
WKL 200 FT wide span cable ladder

Item number: 6232104



Loads

Insertable support spacings, min.	6 m
Insertable support spacings, max.	10 m
Support spacing 6.0 m	3 kN/m
Support spacing 7.0 m	2.5 kN/m
Support spacing 8.0 m	2 kN/m
Support spacing 9.0 m	1.4 kN/m
Support spacing 10.0 m	1 kN/m



Load diagram, wide span cable ladder, type WKL 200

- 1 Permitted cable tray/ladder load in kN/m without man load
- 2 Support width in m
- 3 Rail bend in mm at permitted kN/m
- 4 Load scheme during testing
- Load curve with cable tray/ladder width in mm
- Strut bend curve according to support width