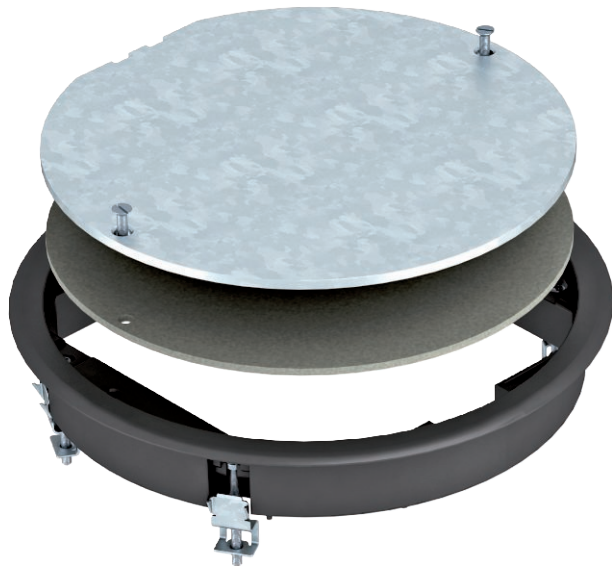


# Technical data sheet

## ZESR4 inspection cover

Item no. 7406776



Draw box insert for blanking locking of a square round mounting opening of nominal size R4 in trunking systems and system floors for indoor use.

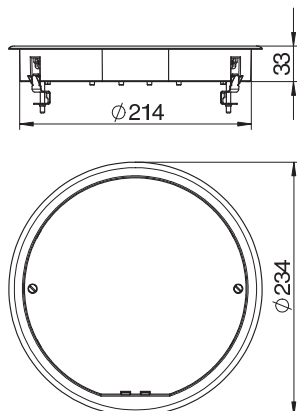


PA Polyamide

### Master data

Item no.	7406776
Type	ZESR4 U 9011
Description 1	Junction box insert
Description 2	for universal mounting
Colour	Graphite black
RAL number	9011
Material	Polyamide
Material symbol	PA
Smallest sales unit (VG)	1 Piece
Weight	140,00 kg/100 pc.

### Technical data



Dimension h	73,00 mm
External diameter	234,00 mm
Installation diameter	214
Number of installable devices	0
Version for	Round
Cable outlet version	No cable outlet
Floor covering thickness	5,00 mm
Floor care	Dry
Installation depth	73,00 mm
Floor height	73 mm
Suitable for wet care	<input type="checkbox"/>
Suitable for screed-covered underfloor ducts	<input checked="" type="checkbox"/>
Suitable for raised floor installation	<input checked="" type="checkbox"/>
Suitable for cavity floor installation	<input checked="" type="checkbox"/>
Suitable for underfloor ducts	<input checked="" type="checkbox"/>
Nominal size for device installation units	R4
Suitable for underfloor box	250/350
Opening mechanism	Tool
Frame version	Carpet protection frame