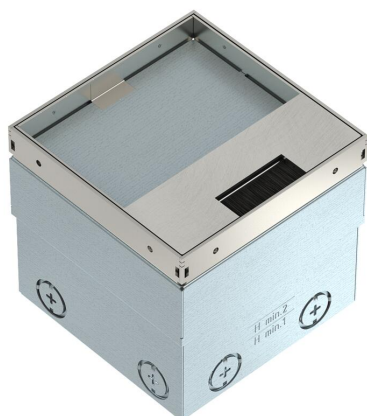


Technical data sheet

UDHOME2 floor socket, with brush outlet, with floor covering recess, unequipped, stainless steel

Item number: 7368353



Square floor socket for use in dry-care cavity and screed floors in indoor areas. Installation housing with pre-marked insertion openings for pipes (M20/M25). Cover adjustable to top edge of floor covering using four height-adjustment supports. The minimum installation depth is 110 mm, the height-adjustment range 25 mm. Frame and cover made of stainless steel and visible in the floor covering. Cover with floor covering recess and brush bar for cable routing. The load-bearing capacity of 15 kN is only guaranteed when in an unused state. Empty housing for up to 2 Modul 45® devices in the mounting support and 2 data sockets in the optional data technology support.



A2 Stainless steel

2B Bright, treated

Master data

Item number	7368353
Type	UDHOME2 BN15
Description 1	Floor socket
Description 2	unequipped, with brush outlet
Manufacturer	OBO
Dimension	140x140x110
Material	Stainless steel
Surface	Bright, treated
Surface standard	
Smallest sales unit	1
Unit of quantity	Piece
Weight	220 kg
Weight unit	kg/100 pc.

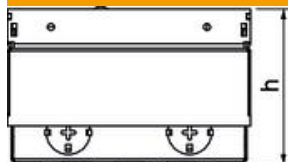
Technical data sheet

UDHOME2 floor socket, with brush outlet, with floor covering recess, unequipped, stainless steel

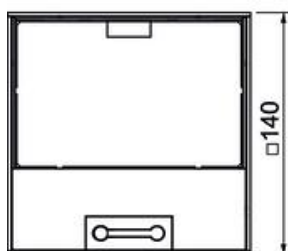
Item number: 7368353



Dimensions



Length	140 mm
Width	140 mm
Height	110 mm
Dimension h	110 mm



Technical data

Number of installable devices	2
No. of entries	8
Number of mounting boxes	0
Number of SCHUKO sockets	0
Number of sockets according to the British standard	0
Version for	Square
Cable outlet version	Brush bar
Equipment	Empty housing
Floor covering protection frame	no
Floor care	Dry
Cover version	Floor covering recess
Seal installation option	no
Application when used	6.101.1 Dry floor care
Application when unused	6.101.1 Dry floor care
Screed height, max.	135 mm
Screed height, min.	110 mm
Floor height, max.	135 mm
Floor height, min.	110 mm
Suitable for outdoor use	no
Suitable for raised floor installation	yes
Suitable for screed-flush closed underfloor ducts	no
Suitable for screed-covered underfloor ducts	no
Suitable for cavity floor installation	yes
Suitable for wet care	no
Suitable for underfloor ducts	no
Device support to accept mounting boxes	no
Length of external dimensions	140 mm
Length of installation dimensions	144 mm
With floor covering recess	yes

Technical data sheet

UDHOME2 floor socket, with brush outlet, with floor covering recess, unequipped, stainless steel

Item number: 7368353



Technical data

Nominal size for device installation units	2
Height-adjustment range, max.	135 mm
Height-adjustment range, min.	110 mm
Protection rating (IP) when used	IP20
Protection rating (IP) when unused	IP40
Protection rating IK code	IK10
Heavy-duty version	no
Vertical load, large area	to 15,000 N
Vertical load, small area	to 3,000 N
Approvals	VDE
Floor covering thickness	15 mm