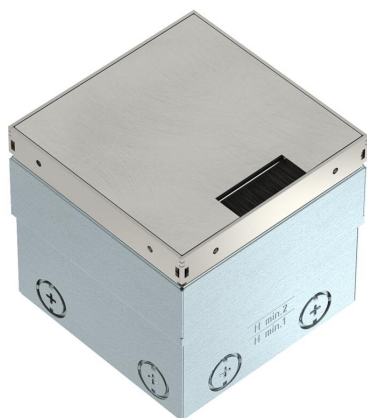


Technical data sheet

UDHOME2 floor socket, with brush outlet, without floor covering recess, unequipped, stainless steel
Item number: 7368352



Square floor socket for use in dry-care cavity and screed floors in indoor areas. Installation housing with pre-marked insertion openings for pipes (M20/M25). Cover adjustable to top edge of floor covering using four height-adjustment supports. The minimum installation depth is 100 mm, the height-adjustment range 35 mm. Frame and cover made of stainless steel and visible in the floor covering. Cover with decorative plate and brush bar for cable routing. The load-bearing capacity of 15 kN is only guaranteed when in an unused state. Empty housing for up to 2 Modul 45® devices in the mounting support and 2 data sockets in the optional data technology support.



A2	Stainless steel
2B	Bright, treated

Master data

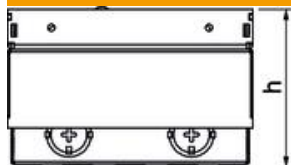
Item number	7368352
Type	UDHOME2 BN
Description 1	Floor socket
Description 2	unequipped, with brush outlet
Manufacturer	OBO
Dimension	140x140x110
Material	Stainless steel
Surface	Bright, treated
Surface standard	
Smallest sales unit	1
Unit of quantity	Piece
Weight	220 kg
Weight unit	kg/100 pc.

Technical data sheet

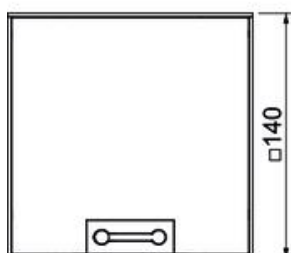
UDHOME2 floor socket, with brush outlet, without floor covering recess, unequipped, stainless steel
Item number: 7368352



Dimensions



Length	140 mm
Width	140 mm
Height	100 mm
Dimension h	100 mm



Technical data

Number of installable devices	2
No. of entries	8
Number of mounting boxes	0
Number of SCHUKO sockets	0
Number of sockets according to the British standard	0
Version for	Square
Cable outlet version	Brush bar
Equipment	Empty housing
Floor covering protection frame	no
Floor care	Dry
Cover version	Decorative plate
Seal installation option	no
Application when used	6.101.1 Dry floor care
Application when unused	6.101.1 Dry floor care
Screed height, max.	135 mm
Screed height, min.	100 mm
Floor height, max.	135 mm
Floor height, min.	100 mm
Suitable for outdoor use	no
Suitable for raised floor installation	yes
Suitable for screed-flush closed underfloor ducts	no
Suitable for screed-covered underfloor ducts	no
Suitable for cavity floor installation	yes
Suitable for wet care	no
Suitable for underfloor ducts	no
Device support to accept mounting boxes	no
Length of external dimensions	140 mm
Length of installation dimensions	144 mm
With floor covering recess	no

Technical data sheet

UDHOME2 floor socket, with brush outlet, without floor covering recess, unequipped, stainless steel
Item number: 7368352



Technical data

Nominal size for device installation units	2
Height-adjustment range, max.	135 mm
Height-adjustment range, min.	100 mm
Protection rating (IP) when used	IP20
Protection rating (IP) when unused	IP40
Protection rating IK code	IK10
Heavy-duty version	no
Vertical load, large area	to 15,000 N
Vertical load, small area	to 3,000 N
Approvals	VDE