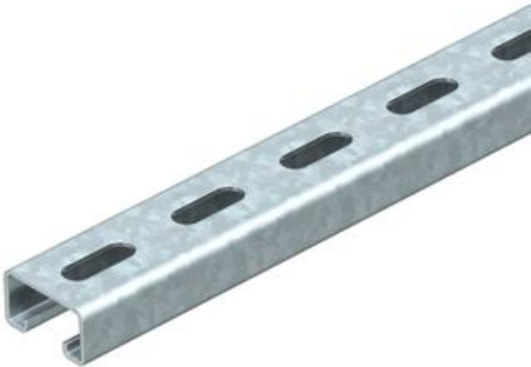


# Technical data sheet

MS4121 mounting rail, slot 22 mm, FT, perforated

Item number: 1122924



Heavy-duty C profile rail for individual installation of support constructions, e.g. for cable trays or as a panel for switchgear cabinets. Can also be used for cable routing, in conjunction with clamp clips with a U foot.



St

Steel

FT

Hot-dip galvanised

Master data	
Item number	1122924
Description 1	Profile rail
Description 2	perforated, slot 22mm
Manufacturer	OBO
Dimension	3000x41x21
Material	Steel
Surface	Hot-dip galvanised
Surface standard	DIN EN ISO 1461
Smallest sales unit	3
Unit of quantity	Metre
Weight	151.3 kg
Weight unit	kg/100 m
CO Footprint (GWP) Cradle-to-Gate	3,2612 kg COe / 1 Meter

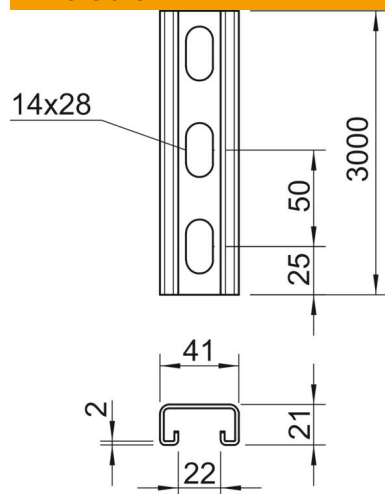
# Technical data sheet

MS4121 mounting rail, slot 22 mm, FT, perforated

Item number: 1122924



## Dimensions



Length	3,000 mm
Width	41 mm
Height	21 mm
Dimension L	3,000 mm

## Technical data

Breakable	no
Type of perforation	Perforated back
Version for	Single profile
Drill hole spacing, centre	50 mm
Maintain electrical functions	yes
Hole size	14x28 mm
Material thickness	2 mm
With perforation	yes
With toothing	yes
Profile shape	C profile
Slot width	22 mm
Static value A	1.65 cm <sup>2</sup>
Static value Iy	0.95 cm
Static value Iz	4.51 cm
Static value Wy	0.89 cm <sup>2</sup>
Static value Wz	2.2 cm <sup>2</sup>